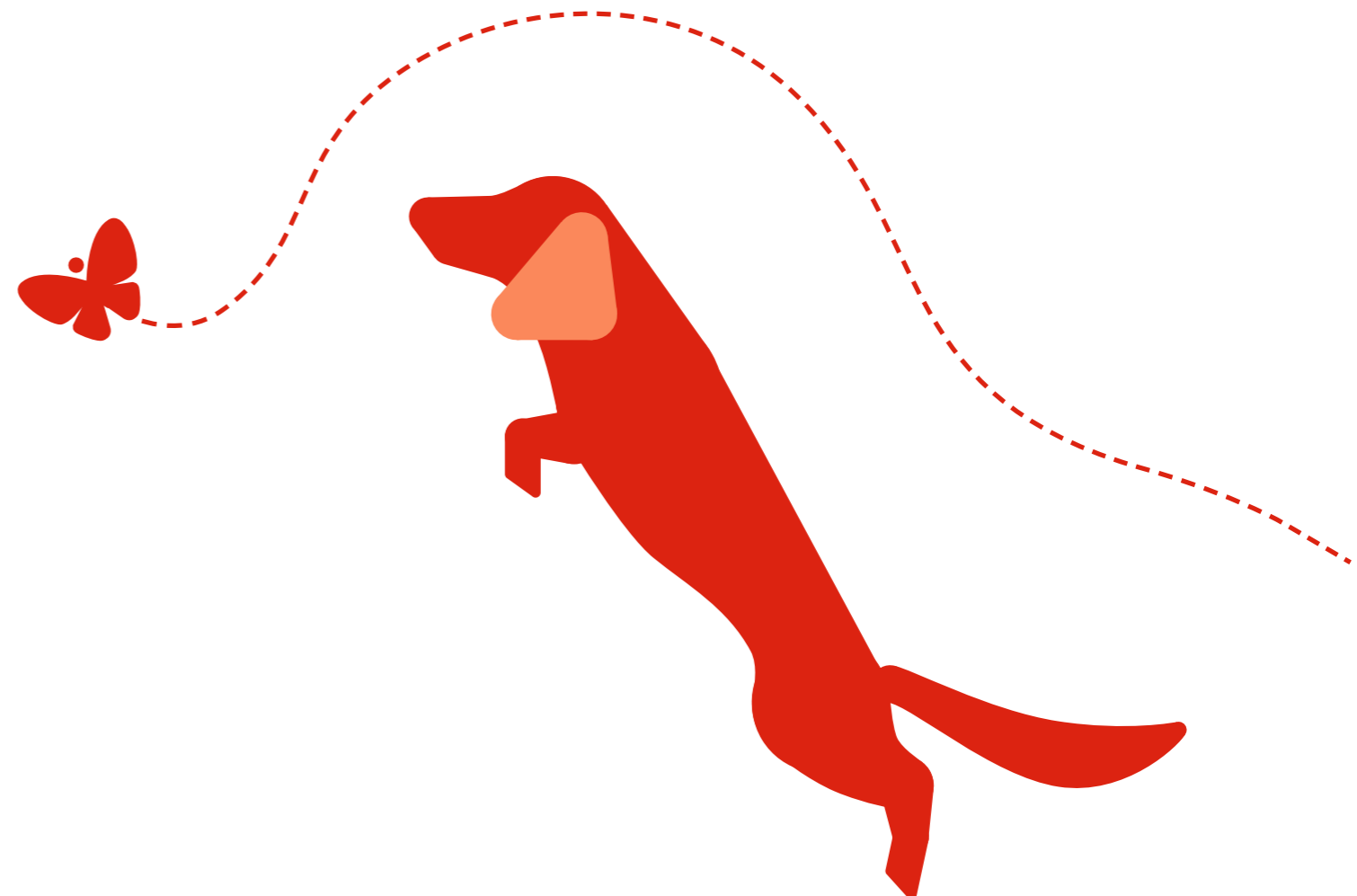


PX Guarantee Campaign concepts - update

A presentation by Aylesworth Fleming Limited to
Linden Homes



PX Campaign

Copy Platform

Headlines

Your move - 100% guaranteed

Guarantee your move with Part Exchange

Part Exchange your way to a guaranteed move

Part Exchange your way to a stress-free move

Want your move stress-free?

Take our Part Exchange guarantee

Make a smart move...

With a stress-free guarantee

Lose the chains...

With Part Exchange

Swap stress for security...

No chains with Part Exchange

the 100% stress-free guarantee

Body Copy

With a range of stunning new homes that are built and ready to move into now, Part Exchange can get you moving with hassle-free guarantees*

- We become your guaranteed buyer - no more worries about buyers pulling out
- An agreed market value price for your home
- Freedom from chains and estate agency fees
- A guaranteed moving date so you can plan your move

PX Campaign
Half Page Ad styling

Burghfield Place
Place
GUNTHORPE

Guarantee your move with Part Exchange



With a range of stunning new homes that are built and ready to move into now, Part Exchange can get you moving with hassle-free guarantees*

GUNTHORPE
Beadle Way PE4 7AP
2, 3 & 4 bedroom homes
from £139,995

- We become your guaranteed buyer - no more worries about buyers pulling out
- An agreed market value price for your home
- Freedom from chains and estate agency fees
- A guaranteed moving date so you can plan your move

Marketing Suite and Show Homes
open daily 10.30am - 5pm
01733 327625
lindenhomes.co.uk



*On selected homes only. Subject to status, terms and conditions apply. Not available in conjunction with any other offer. Price correct at time of going to press. Image shows XXXX.

PX Campaign

A5 2PP mailer

Burghfield Place
GUNTHORPE



100%
Guaranteed

Guarantee your move...
With Part Exchange



Linden
HOMES

from £139,995

stunning new homes that are
to move into now, Part Exchange
with hassle-free guarantees*

Guaranteed buyer -
buyers pulling out
the price for your home

- Freedom from chains and estate agency fees
- A guaranteed moving date
so you can plan your move



100%
Guaranteed





Make a smart move...
With a stress-free guarantee

Marketing Suite and Show Homes
open daily 10.30am - 5pm
01733 327625
lindenhomes.co.uk



Linden
HOMES

*On selected homes only. Subject to status, terms and conditions apply. Not available in conjunction with any other offer. Price correct at time of going to press. Image shows XXXX.

Front

Back

PX Campaign

Emailer



Guarantee your move... With Part Exchange



**Burghfield
Place**
GUNTHORPE

GUNTHORPE
Beadle Way PE4 7AP
2, 3 & 4 bedroom homes from **£139,995**

**With a range of stunning new homes
that are built and ready to move into now,
Part Exchange can get you moving with
hassle-free guarantees***

- We become your guaranteed buyer - no more worries about buyers pulling out
- An agreed market value price for your home
- Freedom from chains and estate agency fees
- A guaranteed moving date so you can plan your move

[Discover More](#)

WHAT'S NEXT?

[Download Brochure](#)

[Request Call Back](#)

[Virtual Tour](#)

[Map & Local Area](#)



*On selected homes only. Subject to status, terms and conditions apply. Not available in conjunction with any other offer. Price correct at time of going to press. Image shows XXXX. XXXXX/August 2011

Galliford Try Homes Limited. Reg. No. 03158857 VAT No: 834860413
Reg Office: Cowley Business Park, Cowley, Uxbridge, Middlesex UB8 2AL

PX Campaign

Linden web page banner

Your move -
**100%
guaranteed**

with **Part
Exchange**



to find out more on
Part Exchange

[Click Here](#)



Register or Login: [login](#)

[Home](#) [About Us](#) [Buying Your New Home](#) [Media Centre](#) [Customer Service](#) [Second Hand Homes](#)



Burghfield Place, Peterborough



You are here: [Home](#) > [Cambridgeshire](#) > [Burghfield Place, Peterborough](#)

[Burghfield Place](#) [Layout](#) [Prices](#) [Specification](#) [Location](#) [News](#) [Contact Us](#)

Your move -
**>100%
guaranteed**

Burghfield Place, Peterborough

A mix of two, three and four bedroom homes - offers a wide range of stunning designs, located on the northern outskirts of the city.

2, 3 & 4 bedroom homes from £129,995

Opening Times: Daily, 10:30am until 5:00pm

Phone Number: 01733 327625

Email: [Click here](#)

Postcode: PE4 7AS

**Burghfield
Place
GUNTORPE**



Arrange an Appointment



Development Brochure



Call Back Request

Stamford Homes
has become
Linden Homes

[FIND OUT MORE](#)

Home Search

Location:

Price range:

to

Minimum number of bedrooms:

[search](#)

OR

Know where you want to live?

Select a development:

[search](#)

Home of the Week

Home-94

2 Bedroom, Detached

FirstBuy Shared Equity Scheme...

£134,995

[VIEW DETAILS](#)



ARRANGE A CALL BACK



SCHEDULE AN APPOINTMENT

